

FIGURE 1

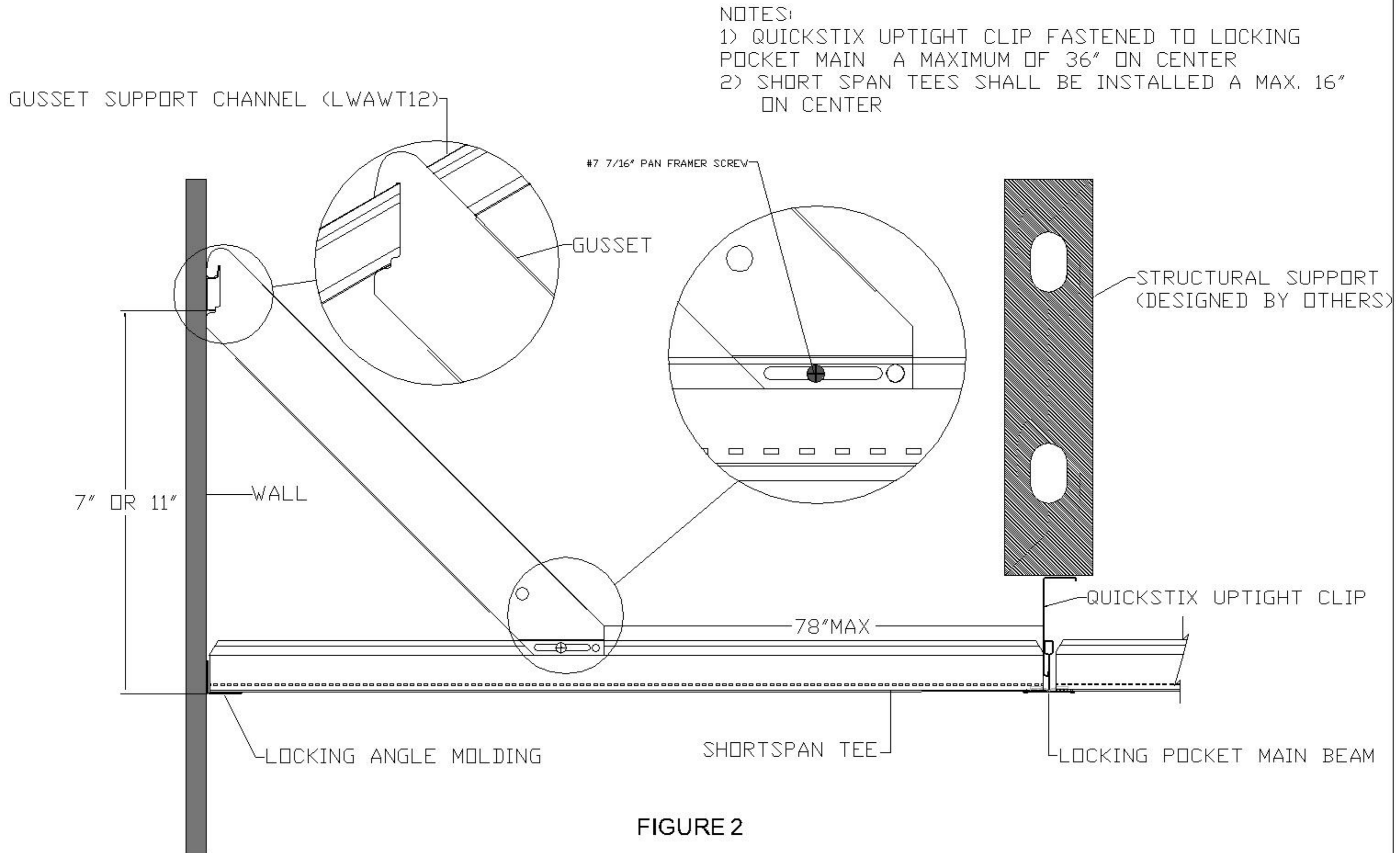


FIGURE 2



NOTES:

- 1) 5/8" MAX GYPSUM PANEL IN COMPLIANCE WITH ASTM C36 OR C1396 SHALL BE USED FASTENED WITH #6 X 1 1/4" DRYWALL SCREWS 8" ON CENTER
- 2) GUSSET SUPPORT CHANNEL SHALL BE MOUNTED 7" ABOVE LOCKING ANGLE MOLDING WHEN USING 8" GUSSET LWAGU08, 11" WHEN USING 12" GUSSET LWAGU12.
- 3) FOR METAL TO METAL CONNECTIONS SCREWS MUST COMPLY WITH ASTM C1513

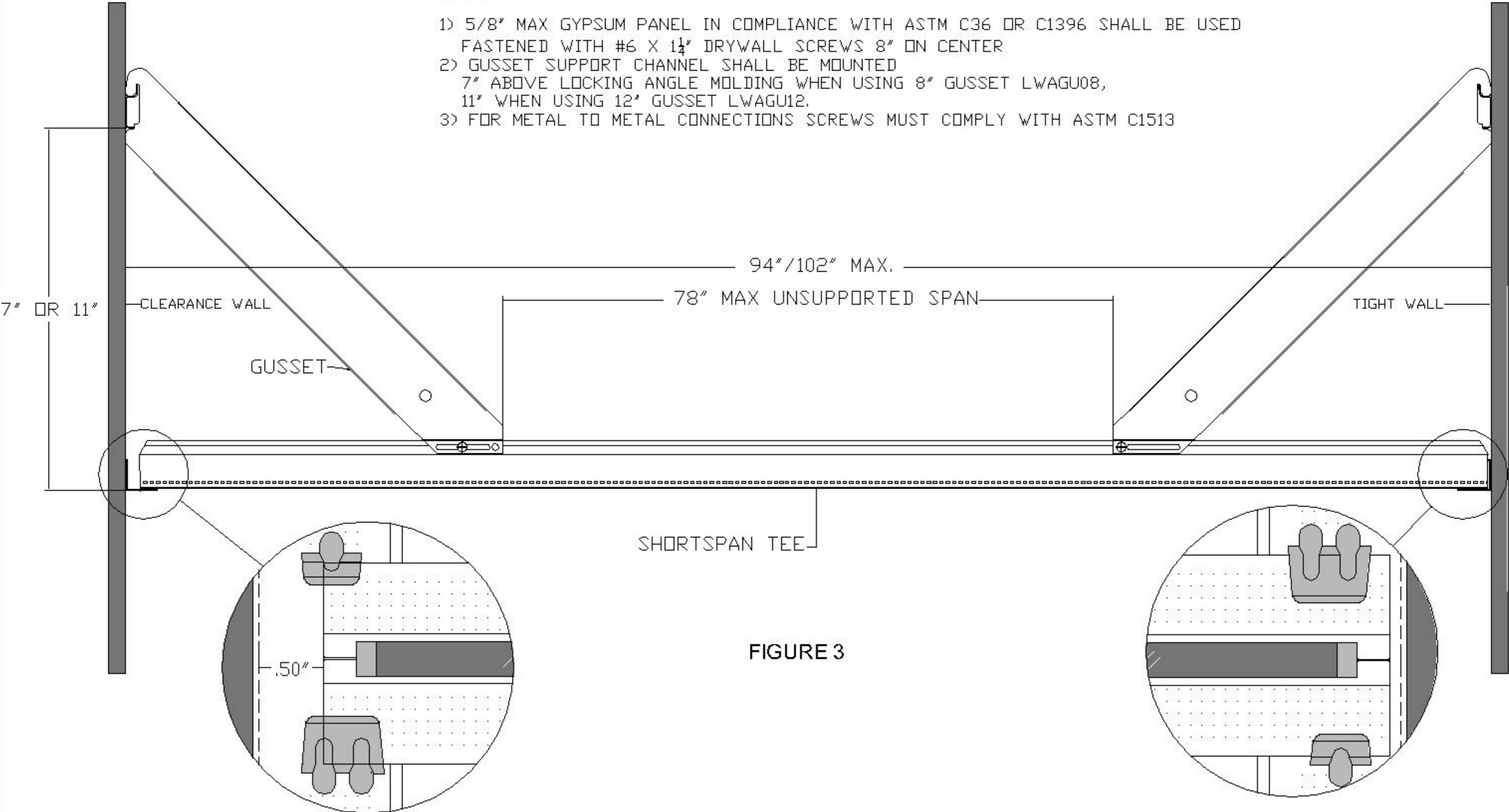


FIGURE 3