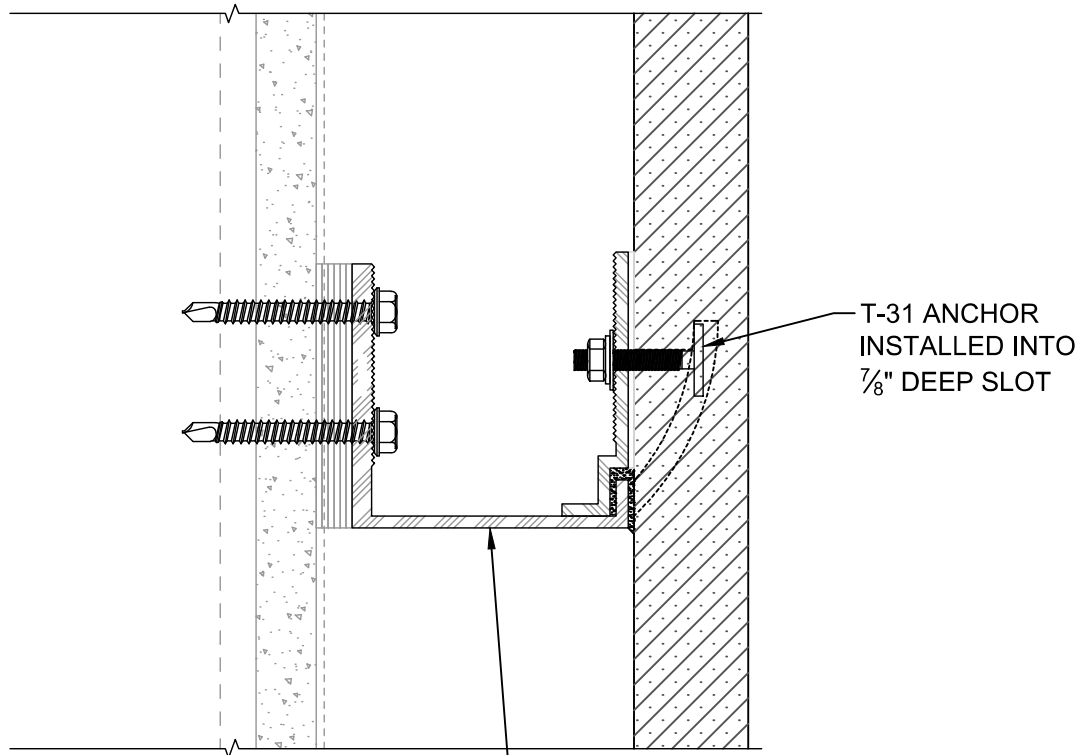




245 N.E. Conifer, P.O. Box 1211
Corvallis, OR 97339
Fax: (541) 757-9885
(541) 757-8991

PROJECT: OCEANWIDE PLAZA EXTERIOR STONE SUPPORT PROJECT NO: 17-674 DESIGN: S.H. DATE: 10/26/18



NOTE:
STONE, ANCHORAGE
COMPONENTS, & ATTACHMENT TO
STRUCTURE TO BE EVALUATED BY
DESIGN PROFESSIONAL.



A TYPICAL T-31 BACK ANCHOR
SCALE: 6"=1'-0"

2018.10.26 08:52:39-07'00'

FILE: J:\17\600\17674 Oceanwide Plaza\17674_SK-A.dwg 10/26/2018 8:30 AM - Jennifer



245 N.E. Conifer, P.O. Box 1211
 Corvallis, OR 97339
 Fax: (541) 757-9885
 (541) 757-8991

PROJECT: OCEANWIDE PLAZA EXTERIOR STONE SUPPORT PROJECT NO: 17-674 DESIGN: S.H. DATE: 10/26/18

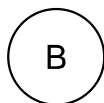
TABLE 1

ANCHOR	ALLOWABLE TENSION CAPACITY
T-31	410 lbs

NOTES:

1. ALLOWABLE TENSION CAPACITY BASED ON FACTOR OF SAFETY OF 4 FOR GRANITE STONE
2. ALLOWABLE TENSION CAPACITY DETERMINED FOR 3CM GRIS PARGA GRANITE ONLY. ALLOWABLE CAPACITY IS NOT TO BE EXTRAPOLATED FOR OTHER STONE TYPES.
3. ALLOWABLE TENSION CAPACITY IS FOR T-31 INTO STONE ONLY. OTHER STONE ANCHORAGE COMPONENTS TO BE EVALUATED BY A DESIGN PROFESSIONAL.

FILE: J:\17\600\17674 Oceanwide Plaza\17674_SK-B.dwg 10/24/2018 3:48 PM -- Jennifer



ALLOWABLE TENSION CAPACITY

SCALE: N.T.S.



2018.10.26 08:52:46-07'00'